



Optimize your bandwidth with Zoom Mesh

Zoom Mesh is a native eCDN solution designed to address network bandwidth constraints of Zoom Meetings, Webinars and Events. Zoom Mesh utilizes dynamic client-based peer-to-peer media forwarding technology implemented in Zoom client and controlled by Zoom cloud.

This solution relies on advanced algorithms to create an intelligent broadcasting mesh by selecting certain clients as “parent”s to receive media from the cloud and others as “children” to receive media from the parents to significantly reduce the amount of internet bandwidth required to conduct Zoom Meetings, Webinars, and Events.

Why Zoom Mesh?



Bandwidth overload

As employees return to the office, admins are rightfully concerned about office WAN or Internet connections being overwhelmed by hundreds—and even thousands—of Zoom clients wishing to join Zoom Meetings, Webinars, and Events simultaneously.



Ease of deployment and use

With seamless integration into the Zoom ecosystem you can deploy Zoom Mesh in minutes and start optimizing your bandwidth for Zoom Meetings and Webinars, as well as Zoom Events immediately, with no change to the user experience. Moreover Zoom Mesh does not require you to install any equipment on your premises.



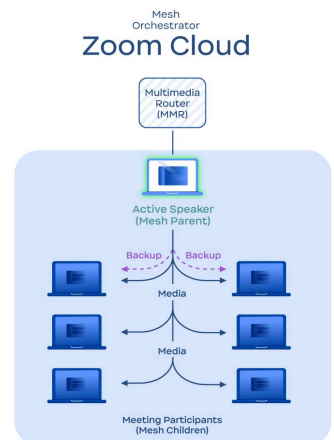
No more third party-integrations

With a native solution from Zoom you can maintain the Zoom user experience for all of your hosts and attendees. It allows you to keep unified, native join and calendaring experience. Traditional eCDN Webinar solutions require different join links (URLs) for attendees of a webinar where the user will receive re-streamed media through a web-based interface and will not benefit from native features like chat, raise hand, translation, etc.



Unique optimization

Zoom Mesh for Meetings is based on unique technology proprietary to Zoom. This technology optimizes meeting downstream media and is capable of rapid dynamic parent reassignment as meeting layout and number of attendees changes.



Bring your company together

The simple setup process and no visual impact to the end viewer makes Zoom Mesh a great addition to proven Zoom Meetings and Webinar and Zoom Event offerings.

How Zoom Mesh helps

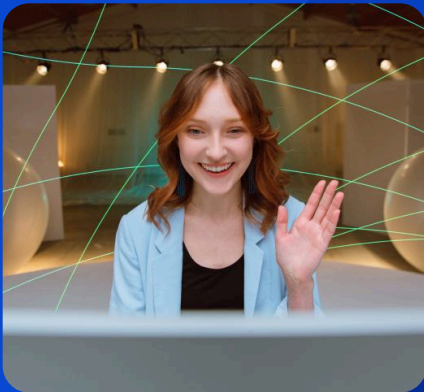
Monitor Mesh Effectiveness

Zoom Mesh dashboard makes it easy for Admins to:

- Monitor Mesh performance
- Measure Zoom Meetings, Webinars and Events bandwidth utilization
- Gain insights in attendee endpoint performance and target audiences
- Analyze mesh ROI

Key features

- ✓ Up to 30 to 1 Mesh “parent” to “children” ratio
- ✓ Up to 100K users per location
- ✓ Up to 1000 locations
- ✓ Support for meetings of 4 and more participants
- ✓ Advanced dashboard (MOS score, status, utilization, performance, ratio, alerting, logging)
- ✓ Global and local mesh options with granular location definition
- ✓ Granular endpoint management (force include/ exclude)
- ✓ High resilience through dynamic parent switching



Evaluate your bandwidth requirements today

Add Zoom Mesh to your Zoom Meetings, Webinars, and Events. Discover how Zoom Mesh will optimize your bandwidth consumption.

[Explore Zoom Mash](#)